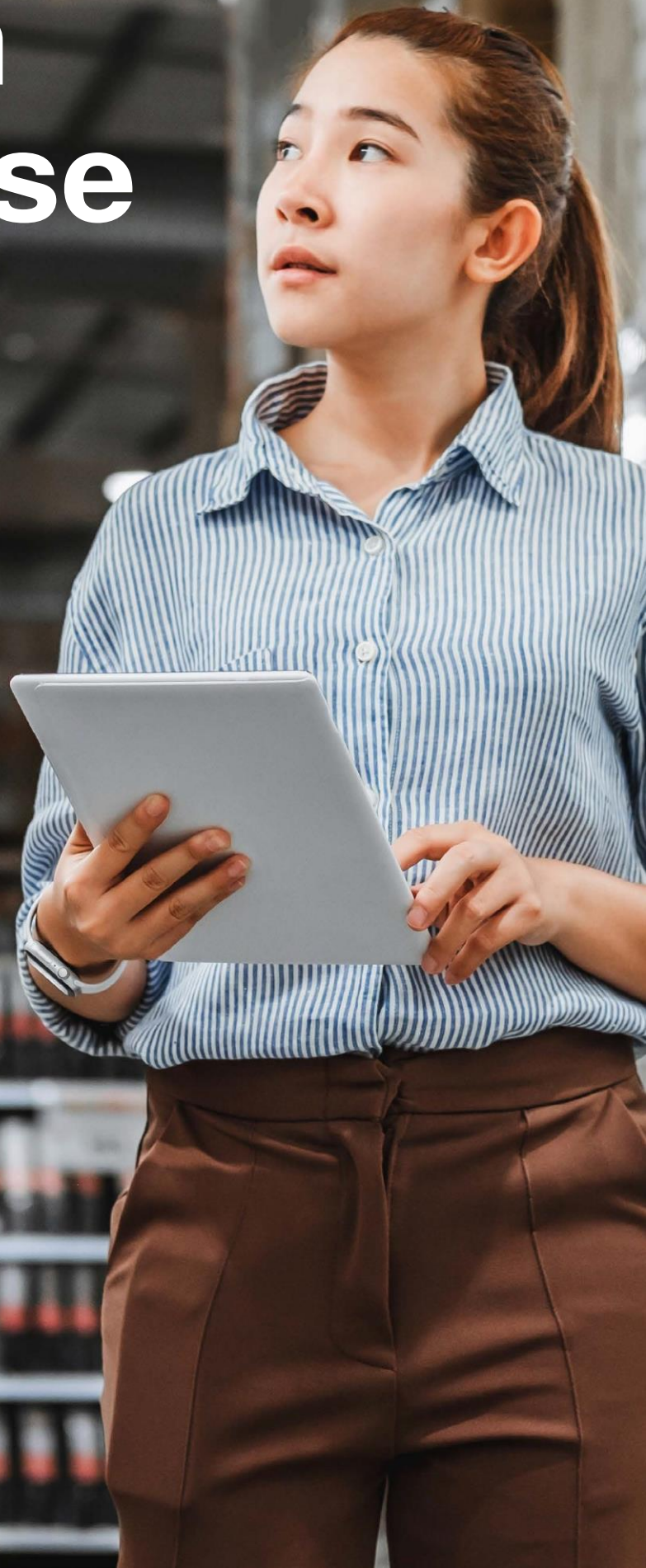


Körber Supply Chain

K.Motion Warehouse Edge

Driving efficiency
for SMB enterprises



K.Motion Warehouse Edge

Our end-to-end warehouse management suite enables executives, managers and warehouse staff to access real-time supply chain analytics and take proactive or corrective action anywhere, any time.



Warehouse teams are always on the move. They need access to relevant information and the ability to respond quickly and easily while on the go. Access to full WMS functionality from any browser, desktop, tablet or smartphone, empowers your workforce to maximize business results through increased mobility, analytics and information exchange.

With a highly accessible and actionable WMS, you will be able to respond to evolving market pressures and deliver on ever-shrinking time-to-delivery windows. A supply chain “control tower” acts as a single command center for visibility, decision-making and action, based on real-time data.

Dynamic responsiveness on the move

Utilizing the responsive capabilities of HTML5 to deliver an intuitive, mobile-friendly user experience across the entire suite, a common interface makes training and on-boarding users faster and easier. E-learning and event management tools also ease on-boarding and promote proactive business management.

Team members are no longer bound to a desk in an office. They can focus on the task at hand and take immediate action on any issues from anywhere within the warehouse, increasing responsiveness and job performance.

Unlike other visibility products that offer only reporting, here you can plan and manage all inventory, processes and people directly from a web browser, whether on your desktop, tablet or phone. The platform advises mobile employees of critical operational events, and your IT department will not need to manage additional IT infrastructure across your supply chain.

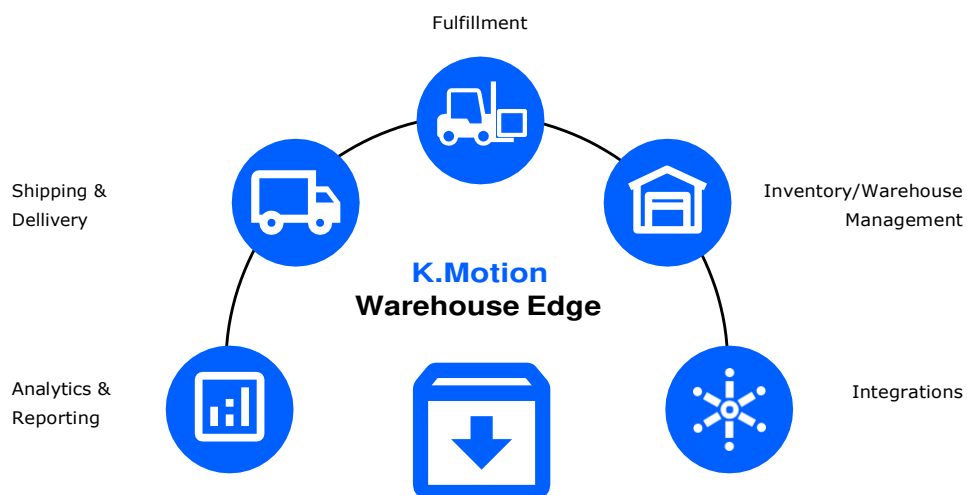
Fully featured, cloud-optimized warehouse suite

To gain the best competitive advantage, small to mid-sized businesses need a low total cost of ownership, maintaining a high degree of functionality with a minimal IT footprint. With our cloud-based WMS, you can manage your receiving, put-away, inventory management, order processing, replenishment, pick/pack, loading and shipping processes with increased flexibility, scalability and security.

By accessing the WMS via a web browser, you will gain the functional benefits of the software with no large, up-front software and hardware costs or drain on IT resources.

Features and benefits

- **Capture of all direct, indirect and lost-time labor activities**
- **Out-of-box supply chain execution tools for unmatched flexibility and adaptability**
- **Proven, seamless integration with most ERPs – Microsoft®, Sage™, NetSuite®, SAP® Business One, Acumatica® and more**
- **Comprehensive security and services infrastructure**
- **Extensible, responsive HTML5 user experience with specific layout guides for desktop functions, tablets and smartphones**
- **Open web service application programming interface (API)**
- **Powerful workflow adaptability layer**
- **Effective team mobilization**



Driving productivity

You can virtually eliminate the need for non-value-added activities such as manual checking and shipment audits. Slotting/re-slotting functionality with user-configured algorithms minimizes travel paths, optimizes picking execution, and intelligently directs put-away to the appropriate bins based on product handling characteristics. Through cross-docking, you further reduce picking time and product touches.

99%+ inventory accuracy avoids costly errors

Through robust cycle counting capabilities, and real-time information confirmation and verification, your team members receive immediate feedback on work accuracy. They are never looking for missing inventory or overloading any given location.

On-time and complete shipments

Accurate order picking functionality allows you to deliver complete orders on time. Through increased fill rates and decreased cycle times, you avoid the costly shipping delays and backorders that jeopardize valuable customer relationships. Decreased cycle times result in more on-time shipments.

Optimized warehouse space

Directed stock rotation, intelligent picking directives, automatic consolidation and cross-docking all maximize your warehouse space usage. The system also directs and optimizes put-away, based on accurate, real-time information about the status of bin utilization.

Reducing shrinkage and spoilage

Real-time monitoring, FIFO (first in, first out) rotation processes and high levels of team member accountability reduce spoilage.

Exceeding customer expectations

With reduced cycle times, stock-outs and backorders, improved order accuracy and on time shipments, you will be able to meet your customer promises on-time, every time.

“Without the foundation of K.Motion Warehouse Edge, achieving 99.99+% inventory accuracy would be impossible.”

Randy Dunn
VP of Operations
DBH Distributing, LLC



Integrated, flexible picking workflows

Gain faster and accurate cycle counts and improve order throughput capacity, increasing lines per hour picked/packed with fewer resources:

- Wave/cluster picking
- Zone picking
- Batch picking
- Replenishment and forward picking
- Waveless picking
- Smart Cart Picking
- Smart Wave Picking
- E-fulfillment

Distribution expertise with full retail compliance

Companies that sell product to major retailers prioritize vendor compliance above all else. Our WMS provides configurable, flexible software necessary to support the complexity associated with high volume fulfillment of pallet, case and unit quantities via small parcel, less-than-truckload and full trailer shipment modes. You can also accommodate large volumes of drop-shipments that require multiple, customer-specific packing slips, routing and electronic data interchange (EDI) requirements.

Unmatched flexibility and adaptability

Whether you need an adaptable solution to fit your unique requirements, or one that can be quickly configured and implemented, our WMS gives you the out-of-box tools for scalable growth. Many organizations want to be able to customize their own processes simply, without modifying source code. If so, then this is the platform for you.

“What I like about K.Motion Warehouse Edge is that it’s rigid – meaning that it makes you do things right – but it’s flexible in that you can mold it to your business.”

Andrew Sisco
Operations Manager
Logo Brands



Low total cost of ownership

Our comprehensive warehouse suite controls and optimizes inventory flow through the extended supply chain, from suppliers through to the end consumer. It combines the functionality and flexibility you need to meet customer expectations, reduce costs and achieve a low total cost of ownership – with a fast return on investment, often in less than 12 months.

Satisfying high-volume internet retail requirements

Internet retailers need to be able to flex capacity for weekly and peak volume fluctuations. Shipments on Monday may not be the same as Friday. Peak, holiday volumes add another dynamic. You can manage for fluctuating demand through our small parcel shipping integration and warehouse automation tools. And you can optimize multi-channel distribution with little to no customization through GS1 (shipment visibility) labels and reports, analytics and flexible business processes.

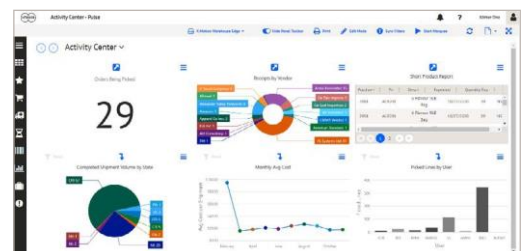
Seamless ERP integration

Our full integration with major ERP systems decreases implementation time and cost, and minimizes time-to-value. We maintain deep technical expertise with Microsoft Dynamics™, Sage™, NetSuite®, Acumatica®, SAP® Business One and Infor™, plus other platforms. And we upgrade and test our integrations prior to our customers upgrading to new versions of existing ERPs.

Broad solution focused capabilities

By sourcing your end-to-end supply chain solution needs from a single partner, you eliminate multi-vendor integrations that complicate implementations, support and upgrades. Our warehouse solution suite contains powerful transportation management, small parcel shipping, yard and dock, labor management, actionable analytics and EDI integration, to ensure the sustained success of your distribution operation.

Small-to-medium-sized businesses (SMBs) need low-cost implementations which are configurable and flexible with a highly prescribed methodology to get them successfully up and running in as little as 90–120 days. Our SMB-focused warehouse management solutions are a perfect fit for companies that have never implemented a WMS, or that have implemented barcoding and want more robust capabilities.



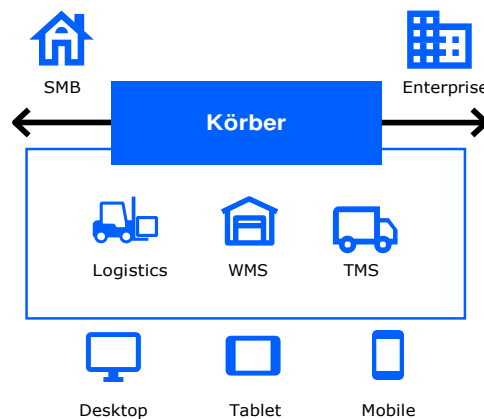
Seamless outbound order process

Integrated shipping functionality eliminates fixed packing stations and shipment paperwork, reduces costly manual errors and increases shipment reliability. Through a powerful multi-carrier rating engine, you will automatically be able to select the cheapest carrier, mode and service level against your delivery timeframes. Through our platform, you will reduce your shipping costs, track every shipment and maintain valuable key performance metrics – all while maintaining complete shipping compliance and delivering superior customer service.



Actionable analytics for informed decision making

With real-time visibility, you can create, manage and view KPI dashboards and analyze ad-hoc business intelligence using pivots, drill-down charts and graphs. You can measure your operation's performance with simple, digestible KPIs that measure people, processes and inventory. And you can view historical trends and real-time metrics that inform your decision making. You can even intersect your supply chain data with other external data sources, such as your ERP.



Easy document and image retrieval

You can automatically store scanned or printed documents, electronic forms or images, then archive the data electronically for easy indexing and retrieval against compliance standards. You can store, search or view any document through optical character recognition. A powerful metadata engine provides various retrieval options.

Automated inspection processes

You can automate your inspection processes for a diverse set of tasks. These include the inbound receipt of goods, outbound sales orders, material handling equipment, tractors/trailers, physical plant equipment and specialized inventory – quickly and easily capturing images at any point of the inspection process.

You can access this HTML5-based solution on any device with an internet connection. You reduce the cost of regulatory compliance and drive the continued performance improvement of producers, suppliers and buyers, minimizing product loss, rejects, chargebacks and recalls.



On-demand reporting

Through this module, you can manage and configure your reporting and run ad-hoc reports. You can also print “over-the-road” shipping documents, gate passes and other such documents that you need in hard copy.

Reporting functionality extends SQL Server Reporting Services with features like report versioning and user-based data filtering. It does this while providing an embedded experience with simplified management.

“Integrating shipping into our warehouse operations has allowed us to more than double our daily parcel shipments, all while improving accuracy, reducing manpower and obtaining better shipment visibility.”

Raymond Soltes
Director of IT
American Heritage Billiards

Cost-effective resource scheduling

External carriers and vendors can log into the portal to schedule a date, time and dock door for deliveries or outbound orders, based on the parameters you set.

This improves your efficiency, throughput and asset utilization.

Tracking and managing shipments on delivery

Through intuitive functionality, you can execute routes, communicate with drivers and gain real-time GPS location data on your "shipments". You can track drivers in your over-the-road fleet, manage final deliveries in a

campus setting, or electronically connect with common carriers. Sign-on-glass technology allows your driver(s) to capture proof of delivery and automatically push updates to customers and dispatchers.

Integrated processes for proven results

- Actionable analytics
- Activity billing
- Configurable appointment scheduling
- Document imaging
- Dynamic quality inspection
- Integrated advance ship notice (ASN) manager
- Multi-carrier shipping
- Label print manager
- Labor management
- Yard and dock
- Robotics and voice

Why Körber?

Today's consumer has ever-higher expectations for purchasing convenience, delivery speed, choice and adaptability. More options for consumers spell greater complexity for the supply chain. It's no longer enough to fulfill demand. You must anticipate it, predict it and make smarter, faster decisions.

With resources tight and competitive pressure relentless, staying ahead means selecting a technology partner with a proven track record of delivering efficiency and a lower cost of ownership. A partner whose flexible, extensible platform integrates quickly and smoothly with your existing systems. All backed by a team with unmatched supply chain expertise – working to help you adapt, grow and succeed.

We have integrated our warehouse, transportation and logistics process expertise with emerging technologies to build the supply chain of the future. Leveraging advanced cloud technology, we help you achieve greater efficiency, uncover actionable insights and stay ahead of the curve.

Learn more about how K.Motion Warehouse Edge can increase efficiencies in your operation here:



577 Kingston Road suite 206
Toronto, Ontario M4E 2A5
416 332 0861
www.impactwms.com

