

Android Voice for K.Motion Warehouse Edge



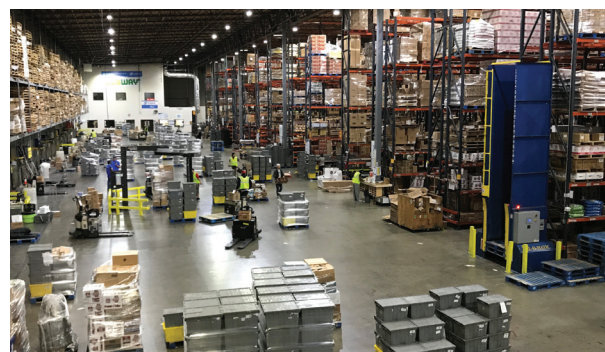
Voice technology for use in the distribution center was created with one purpose in mind: maximizing operational efficiency in the warehouse. Traditional warehouse technologies, like paper and RF scanning, require workers to transfer their attention from the task at hand to a piece of paper or screen and back, taking time and increasing the likelihood of error.

With voice, workers are hand-free and eyes-free, with the voice system speaking instructions from your WMS through a headset. This allows pickers to work quickly and efficiently, increasing productivity and accuracy throughout your warehouse. Voice is typically used to support workflows such as order selection, put-away, replenishment and cycle counting within the warehouse, but it can be deployed into many other areas as well.

Voice boasts benefits like improved productivity, accuracy, training time and safety, with any companies reaching ROI within 12 months.

Benefits of Android Voice for K.Motion Warehouse Edge

- 10-30% productivity improvement over RF
- Accuracy improvement to 99.9%+
- Deployment in 8 weeks or less
- Subscription model available
- On-premises or cloud options available



Android Voice For Edge (AVE)

Android Voice for Edge is the newest offering for Edge customers looking to implement voice using Android solutions. It includes a standard, out of the box integration with Edge, allowing you to fully deploy voice in less than 8 weeks. AVE comes with a standard capability to execute order picking with voice, including wave picking and eFulfillment.

Beyond the basic function of picking, AVE allows your workers to have advanced abilities during the picking process. Should a picker arrive at a location to find that an item is missing or there isn't enough inventory to complete the pick, they can use the voice system to short or skip the pick. You can also choose to interleave cycle counting, allowing the pickers to do a cycle count on the spot when an inventory count at their location drops below a set threshold. Finally, if you need to collect lot information for any of your SKU's, your picker can speak the required information into the voice system, which will translate that information and transmit it back to Edge to be stored.

Honeywell Vocollect Voice

Android Voice for Edge was developed on the Honeywell Guided Work Solutions (GWS) platform specifically for Edge users, allowing you to fully leverage the functionality of Edge with the world-class Voice software from Honeywell Vocollect. The software will run on a wide range of compatible hardware, including Honeywell's mobile computers as well as other Android mobile devices.

Why Android?

Microsoft has announced that by 2020, they will be ending support of legacy Windows products and operating systems. Additionally, existing enterprise devices will become incompatible with most new operating system (OS) developments.

Google Android OS is becoming considerably more prominent in the industry, with IDC reporting the OS has 83% of the global market share. With over 74 enterprise Android device models available from 22 manufacturers, there is a wide range of options to fit any operation. Android is open, flexible, and compatible with Microsoft, offering the kind of control IT demands.¹

Final thoughts

Android Voice for Edge is an excellent option to consider if you're looking for a way to extend and bolster the capabilities of Edge.

Find out more

Learn more about the benefits of voice-enabled work :

[Read more](#) →

Voice architecture

