

HIGHJUMP QUALITY ASSURANCE AND INSPECTION SOLUTION

Neither you nor your customers want to deal with product loss, rejects, charge-backs, or recalls. A strong quality assurance and inspection solution will not only save money otherwise spent on transportation and wasted materials, it can strengthen your brand's reputation.



FEATURES

- Automate quality assurance and inspection processes for a diverse range of subjects
- Trigger inspections automatically based on certain business conditions
- Design custom inspection routines based on workflows unique to your business
- Choose between simple pass/fail checks or program complex weighted criteria
- Integrate with the HighJump supply chain suite or external supply chain and ERP systems
- Go mobile with the web-centric design compatible with any device with a web browser

INSPECT WHAT YOU EXPECT

HighJump's quality assurance and inspection solution allows companies to automate their quality assurance and inspection processes for subjects as diverse as the inbound receipt of goods, outbound sales orders, material handling equipment, tractors/trailers, physical plant equipment, or specialized inventory. By allowing the system to select the items to inspect based upon your business rules, you ensure that all inspection criteria are met before receiving or shipping products. When certain business conditions are met to trigger an inspection, the system automatically schedules an inspection and can flag a hold status on order, if necessary. This helps your company deal with internal audits, compliance, and regulatory requirements with a systematic approach and full audit log.

WHY SHOULD I BE INSPECTING MY PRODUCTS?

An inspection program can assist your company to:

- Strengthen and protect your brand image and reputation
- Reduce the cost of dealing with compliance and regulatory requirements
- Improve performance of suppliers and product quality to minimize product loss, rejects, charge-backs, and recalls
- Drive continued improvement of quality systems and performance to benefit both the buyer and producer
- Protect sales revenue by helping to prevent late shipments, poor quality, wasted materials, or empty shelves



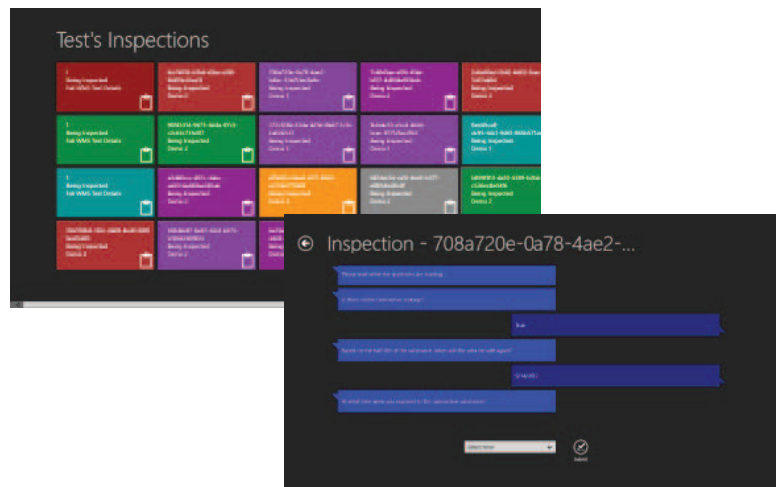
SUPPLY CHAIN NETWORK SOLUTIONS

FLEXIBILITY

HighJump's quality assurance and inspection solution includes templates that allow you to start utilizing the benefits of the system on day one. However, at HighJump we understand that no two businesses are the same. This is why we deliver an inspection design tool with the product that allows you to easily add your own inspection routines. This type of flexibility enables you to have the same type of inspection with different questions, and different pass/fail criteria based on: product line/group, customer, vendor, carrier, or any other data element that is a requirement. For example, my inbound product inspections can have different inspection questions and criteria depending on whether they arrive by UPS, FedEx, or USPS.

EASE OF USE

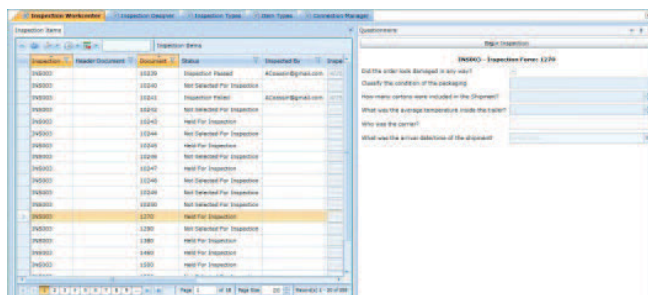
Inspections are built to be sequential, giving users an easy to manage format. The questions you include can be set to 'required' or 'optional', so the user can't accidentally skip over any vital inspection information. In order to make the system as user-friendly as possible, we've designed the sequential order of inspection questions, or prompts, to have the look and feel of a text message or Instant Message (IM) chat screen. Users can go back and review all inspection information easily from the list, and update or change information as needed. This workflow design decreases user training time and lets you easily add temporary or seasonal staff to perform inspections.



The solution can also be leveraged for products that simply require a pass/fail grade before they are entered into the system. If you have more complex criteria than that of a pass/fail inspection, you can assign questions to carry an individual weight that applies to the overall pass or fail logic of the inspection. Once you have your inspection designed, the system takes over and automates the process for you. The solution will automate the schedule for you and can be configured to flag hold statuses, so your warehouse staff can't inadvertently ship goods that were meant to be inspected first.

INTEGRATION BY DESIGN

Like every other member of the HighJump supply chain suite, our quality assurance and inspection application leverages the inbuilt capabilities of the HighJump Platform. You gain key features like seamless integration with other products in the HighJump suite, thus eliminating paper-based processes and dramatically decreasing the likelihood of human error. The solution operates with a wide variety of popular RDBMS (SQL Server, Oracle, MySQL, ODBC) environments. Although the solution is an integrated component of the HighJump suite of supply chain products, it allows for external integration to other supply chain and ERP systems.



ACCESSIBILITY ON-THE-GO

As we move into the age of mobile devices and tablets, HighJump understands that people are changing the way they need to interact with their business technology. Having your business applications available to you on your mobile devices is slowly becoming the standard, instead of the exception. HighJump's quality assurance and inspection solution was designed to be accessible from your web browser or Windows® 8 tablet.

MOBILITY MADE EASY

The solution is the initial HighJump product designed to extend the HighJump product suite to tablets. It was built for Windows® 8 tablets, which enables you to untether the execution of your inspections. This way, you aren't subject to bottlenecks at an inspection station in your warehouse.

PERSONAL DESIGN

The designer tool included with the solution allows you to design your own personal inspection routines at both the header and detail level.

OPEN-ENDED

The solution can be implemented as an integrated component of the HighJump supply chain suite of products, while allowing external integrations into different databases, such as SWL, MySQL, and Oracle.

IMPROVE VISIBILITY

HighJump's web-centric design gives you the ability to allow internal and external users visibility into the status of warehouse operations. Providing visibility creates competitive differentiation for your business that drives ROI.

ABOUT HIGHJUMP

In almost every industry, buyers are becoming more fickle, and more demanding. For logistics executives, effectively meeting buyer needs has become a relentless quest for speed and agility. Traditional supply chain solutions – siloed, complex and hard-to-implement – no longer suffice, as competitors find ways to deliver goods faster and more profitably.

In this “now” economy, HighJump helps you stay agile, with adaptable, connected solutions that harness the power of your trading partner community. From the warehouse to the storefront, from the desktop to the driver's cab, we can help you achieve new levels of supply chain responsiveness, performance and profitability.

HighJump's suite of warehouse management, business integration, transportation management, and retail/DSD solutions form a complete, powerful and adaptable platform that allow you to drive growth, customer satisfaction and revenue. **HighJump: supply chain accelerated.**

www.highjump.com



THE HIGHJUMP TEAM IS HERE TO HELP!

If you have any questions regarding HighJump or how our products can improve your business, our passionate team is here for you.

Call us today at 800.328.3271. or email info@highjump.com

