

# WAREHOUSE MANAGEMENT SYSTEM FOR SAGE X3

Directing Your Warehouse Efficiency



- **Empowering the customer with the advanced workflow engine. Customize your WMS without writing code.**
- **More automated and customizable user experience through tailoring the user interface for unique roles and leveraging system generated alerts and emails.**
- **Embracing the Cloud - Simple Cloud-delivered training videos, label-printing, software updates and content enhancements.**
- **A series of subject workcenters facilitates reporting and research into your customers, vendors, product and Sage X3 integration.**

Your business runs on Sage X3. While Sage X3 is known for its robust financial management capability, many organizations seek additional supply chain execution and trading partner integration functionality. In response to this demand, HighJump has developed AccellosOne Warehouse Management System specifically designed to seamlessly integrate with Sage X3. Learn why hundreds of Sage customers trust HighJump with their complex supply chain needs.

## HIGHJUMP WAREHOUSE MANAGEMENT FOR SAGE X3

Your business is growing, you operate one or many warehouses, and you're considering what kind of warehouse software is a fit for you. These may be some of your day-to-day considerations:

- Supporting increased sales without increasing staff or space
- Limitations/availability of warehouse space
- Increasing demand/supply fluctuations
- Paper based, bar coding or best-of-breed warehouse software
- Cloud or on premises deployment

You may also be part of an omnichannel distribution strategy, and considering how to:

- Increase order accuracy and inventory visibility
- Integrate shipping, ASN printing, and EDI as part of the outbound order process
- Minimize inventory carrying costs and conduct cycle counts quickly and accurately

- Mobility - Our tablet app allows inspection and reporting on the go.
- Extensible UDF Framework - As a component of the HighJump “Zero Modification” initiative, this allows the IT organization to seamlessly add new information to the tables.

## Functional Enhancements

- Improved delivery and load building
- Enhanced container management
- Extensions to the directed move manager
- New scheduled task management system
- Improved Advance Replenishment functionality

## Enhanced integration with all HighJump’s warehouse management solutions:

- Dynamic quality inspection
- Document imaging
- Multi-carrier shipping
- Configurable appointment scheduling
- Activity billing
- Integrated ASN manager
- Label print manager

- Decrease warehouse labor costs and potential chargebacks and penalties from retailers
- Utilize one of many available pick methods

HighJump can help. The HighJump Warehouse solution was built by supply chain experts to provide the out-of-the box tools and the extensibility to tackle even the most difficult tasks in the warehouse.

## ENTERPRISE SCALABILITY

HighJump Warehouse is designed for small to mid-sized businesses, meaning it doesn’t require an army of IT staff to support. You are able to start with the functionality that you need now at a price that makes sense and scale for growth over time. Our seamlessly integrated modules and applications are available to you when you need them.

## BREADTH, DEPTH, AND REACH

HighJump Warehouse is built on a web-centric platform with standard best-of-breed warehouse management features, as well as dynamic directed putaway, several bar code supported picking styles, container building, cartonization, repackaging, voice, and RFID to name a few.

## ADVANCED WORKFLOW ENGINE

We’ve incorporated Microsoft’s advanced workflow engine in the HighJump Platform. Workflow empowers you to customize the functionality of the WMS rather than writing code. Better results and easier upgrades.

## ADVANCED EVENT ENGINE

The new Advanced Event Engine provides powerful tools designed to leverage the system to deliver real-time information on behalf of your employees. The system can tap new orders, receipts, bills, or customers that meet user defined criteria and generate emails, text messages, workflows, database updates, or custom actions.

## EXTENSIBLE PERFORMANCE REPORTING

HighJump WMS incorporates the powerful HighJump Report application to enhance the core reporting capability, deliver new Performance Reports, and allow for better user definable reporting extensions.

## ENHANCED SUPPLY CHAIN INTELLIGENCE

HighJump WMS delivers more powerful access to key performance indicators (KPIs) that can assist a business manager in more effectively making decisions within their business. New Pivot capabilities enable users virtually limitless ways to slice and dice information. The Win 8.1 tablet app mobilizes information wherever it is needed to illuminate trends and highlight outliers so that effective decision making becomes commonplace.



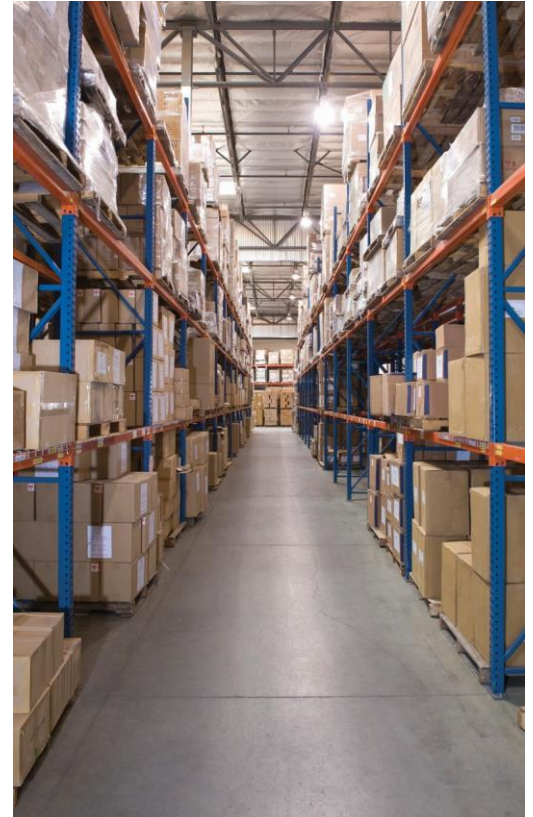


### ONE MODULAR SOLUTION SUITE TO FIT YOUR SAGE X3

Functionality is important. Couple that with a tight integration to your Sage X3 and an enduring company that cares for its customers and its R&D budget, and you've got a good fit. HighJump's configurable web services integration platform stands between the warehouse and your Sage X3, order management, ecommerce, or purchasing system(s).

Leverage prebuilt integration toolkits for Sage X3. Here are some examples of modules within the HighJump solutions suite:

- **Dynamic Quality Inspection:** Tailored quality inspections can be designed with custom questionnaires, focused pass/fail criteria, and conditional activities to ensure the quality of both inbound and outbound processes. Mobile users can leverage the intuitive Win 8.1 tablet app to not only execute the inspections, but record pictures of the condition of the material, trailer, or container.
- **Integrated Document Imaging with OCR Support:** The latest release of our Document Imaging system increases the user's ability to navigate towards a paperless environment by offering optional OCR support. This allows the development of "form templates" which can be used to scan key information from a printed page and use that information to associate the document with relevant information stored in the WMS.
- **Powerful Multi-Carrier Shipping:** Some see shipping as a disconnected process outside the WMS proper. HighJump sees it as an integrated step in the pick/pack/ ship handheld workflow allowing the user to save time and simplify their warehouse processes. The latest version of our multi-carrier shipping streamlines not only the "inline" shipping functionality, but also the exception shipping done from our shipping station.
- **Configurable Appointment Scheduling:** We've enhanced the appointment scheduling capability available to the WMS 6.5 user by allowing them to manage a discrete number of appointments by time slot without predetermining an actual door assignment. This allows them to determine labor required and assign the available door when the inbound or outbound carrier arrives. From this information, we've driven solid KPIs that assist in both planning and negotiating arrangements with key carriers.
- **Extensible Activity Billing:** The latest version of activity billing extends the capability for those users of the WMS who are either third party logistics companies (3PLs) or who share space in a single facility with others and bill them on a space and services rendered basis.
- **Integrated ASN Manager:** While HighJump Warehouse has provided data for ASN production for many releases, the incorporation of the ASN Manager takes the capability to a new level. The people responsible for EDI within an organization now have full visibility, access, and edit capability to ensure that the ASN payload that is



sent out is accurate and compliant with the requirements of the trading partner. The system also provides the ability to print GS1 labels, Bills of Lading, and Commercial Invoices.

- **Cloud-ready Label Print Manager:** More and more customers are opting to use the cloud for their computing environment - whether it's a private cloud of their own or leveraging one of the HighJump OnDemand public cloud solutions. Our Print Manager provides a secure, high-performance means of printing things like bar code compliance labels on premise while the services run in the cloud. This allows you to print jobs via the internet without utilizing a VPN.

## RUGGEDIZED HANDHELD DESIGN TOOLS

There are typically more handheld WMS users than those using the desktop apps. The WMS Design Toolkit allows those users to have the same degree of configurability that the desktop user has. Built on top of our Workflow engine, the Design Toolkit provides a graphical design surface to reconfigure both the workflow (business logic) of a handheld function as well as the user experience itself.

## CLOUD eLEARNING

As a society we've moved into the "YouTube" mode of learning. Our cloud content delivery network is hosted in Microsoft Azure and syndicated throughout the world for fast, efficient streamed delivery of "help" videos and multi-lesson classes. HighJump eLearning provides powerful information designed to make your users more knowledgeable and self-sufficient.

## FLEXIBLE DEPLOYMENT OPTIONS

HighJump WMS is available on premises or Cloud-delivered in a software-as-a-service (SaaS) model.

## ABOUT HIGHJUMP

In almost every industry, buyers are becoming more fickle, and more demanding. For logistics executives, effectively meeting buyer needs has become a relentless quest for speed and agility. Traditional supply chain solutions - siloed, complex, and hard-to-implement - no longer suffice, as competitors find ways to deliver goods faster and more profitably.

In today's "now" economy, HighJump helps you stay agile with adaptable, connected solutions that harness the power of your trading partner community. From the warehouse to the storefront, from the desktop to the driver's cab, we can help you achieve new levels of supply chain responsiveness, performance, and profitability.

HighJump's suite of warehouse management, business integration, transportation management, and retail/DSD solutions form a complete, powerful, and adaptable platform that allow you to drive growth, customer satisfaction, and revenue. **HighJump: supply chain accelerated.**

[www.highjump.com](http://www.highjump.com)



## THE IMPACT TEAM IS HERE TO HELP!

If you have any questions regarding HighJump or how our products can improve your business, our passionate team is here for you.

Call toll free at 855.332.0861 or email [sales@impactwms.com](mailto:sales@impactwms.com)

sage

Endorsed  
Solution

HighJump™

SUPPLY CHAIN NETWORK SOLUTIONS